



# TPPP rabbit pAb

<b>Catalog No</b>	YP-Ab-12551
<b>Isotype</b>	IgG
<b>Reactivity</b>	Human; Mouse; Rat
<b>Applications</b>	WB
<b>Gene Name</b>	TPPP TPPP1
<b>Protein Name</b>	TPPP
<b>Immunogen</b>	Synthesized peptide derived from human TPPP
<b>Specificity</b>	This antibody detects endogenous levels of TPPP at Human, Mouse, Rat
<b>Formulation</b>	Liquid in PBS containing 50% glycerol, and 0.39% sodium azide.
<b>Source</b>	Polyclonal, Rabbit, IgG
<b>Purification</b>	The antibody was affinity-purified from rabbit serum by affinity-chromatography using specific immunogen.
<b>Dilution</b>	WB 1:500-2000
<b>Concentration</b>	1 mg/ml
<b>Purity</b>	≥90%
<b>Storage Stability</b>	-20°C/1 year
<b>Synonyms</b>	Tubulin polymerization-promoting protein (TPPP) (25 kDa brain-specific protein) (TPPP/p25) (p24) (p25-alpha)
<b>Observed Band</b>	
<b>Cell Pathway</b>	Golgi outpost . Cytoplasm, cytoskeleton, microtubule organizing center . Cytoplasm, cytoskeleton . Nucleus . Cytoplasm, cytoskeleton, spindle . Specifically localizes to the postsynaptic Golgi apparatus region, also named Golgi outpost, which shapes dendrite morphology by functioning as sites of acerosomal microtubule nucleation (By similarity). Mainly localizes to the cytoskeleton (PubMed:18028908). Also found in the nucleus; however, nuclear localization is unclear and requires additional evidences (PubMed:18028908). Localizes to glial Lewy bodies in the brains of individuals with synucleinopathies (PubMed:15590652, PubMed:17027006). During mitosis, colocalizes with LIMK2 at the mitotic spindle (PubMed:22328514). .
<b>Tissue Specificity</b>	Widely expressed.
<b>Function</b>	function: Promotes in vitro the polymerization of tubulin into double-walled tubules and polymorphic aggregates or bundled stabilized microtubules blocks. When overexpressed, inhibits mitotic spindle assembly and nuclear envelope breakdown, apparently without affecting other cellular events. . PTM: Phosphorylated by TPK II. Poor substrate for GSK3. . similarity: Belongs to the TPPP family. . subunit: May form dimers. Binds tubulin; binding is inhibited by GTP. Interacts with GSK3. . tissue specificity: Widely



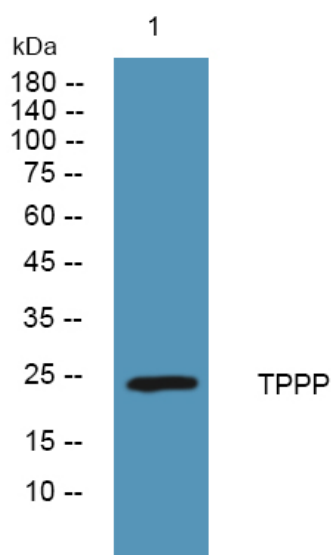
expressed.,

**Background****matters needing attention**

Avoid repeated freezing and thawing!

**Usage suggestions**

This product can be used in immunological reaction related experiments. For more information, please consult technical personnel.

**Products Images**

Western blot analysis of lysates from HCT116 cells, primary antibody was diluted at 1:1000, 4° over night